

BUILDING COMMUNITY PROTECTING YOUR RIGHTS



UAW Local 1596

The Graduate Employee Organization (GEO) of University of Massachusetts Boston

Representing Graduate Assistants, Research Assistants, and Teaching Assistants and Fellows

 /UmassBostonGEO
 /GEOUMB

www.geoumb.org
geoumassboston@gmail.com

Workload



1.0 FTE work 18 hrs / week and
0.5 FTE employees work 9 hrs/week.

Maintaining good academic standing is
required to keep your position at UMB.

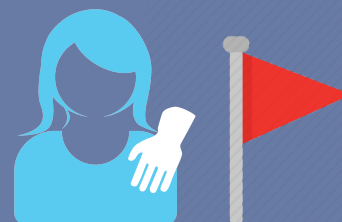
Health benefits



Student healthcare plans cover
85% of health insurance and
50% of vision and dental.

Students are not just brains - we
have teeth, eyes and bodies, too.

Sexual harassment and discrimination



Sexual harassment and discrimination
on the grounds of sexual orientation,
race, class, gender, religion, and
nationality **is strictly prohibited**
and it still happens at UMass Boston.

If you feel like you have been
harrassed and want to talk to someone
about it, GEO is here to listen.
If you want to take action, we can help.

*Contact us immediately if you believe
you have been subjected to any form of
harassment or discrimination.*

Grievances



The GEO is here to help if you have
disputes with supervisors,
coworkers or human resources.

Our process begins with
informal attempts and we have the
full support of the UAW legal team,
if required.

Tuition waivers



It might be taken for granted but
approximately half of a full time
Graduate Assistant's compensation
is tuition relief.

SSF



The Scholarly Support Fund
distributes \$12,500 annually to
our members attending and
presenting at conferences.
Check with your department rep
about deadlines and forms.

Department Reps



Being a department rep helps
ensure that GEO can help deal with
specific issues in your department
not just across campus as a whole.

Comp & Raises



1.0 FTE graduate assistants earn
\$17,736 in a.y. 2018-2019.

This salary is 2% higher than
2016-2017 and will increase another
2% in a.y. 2019-20.